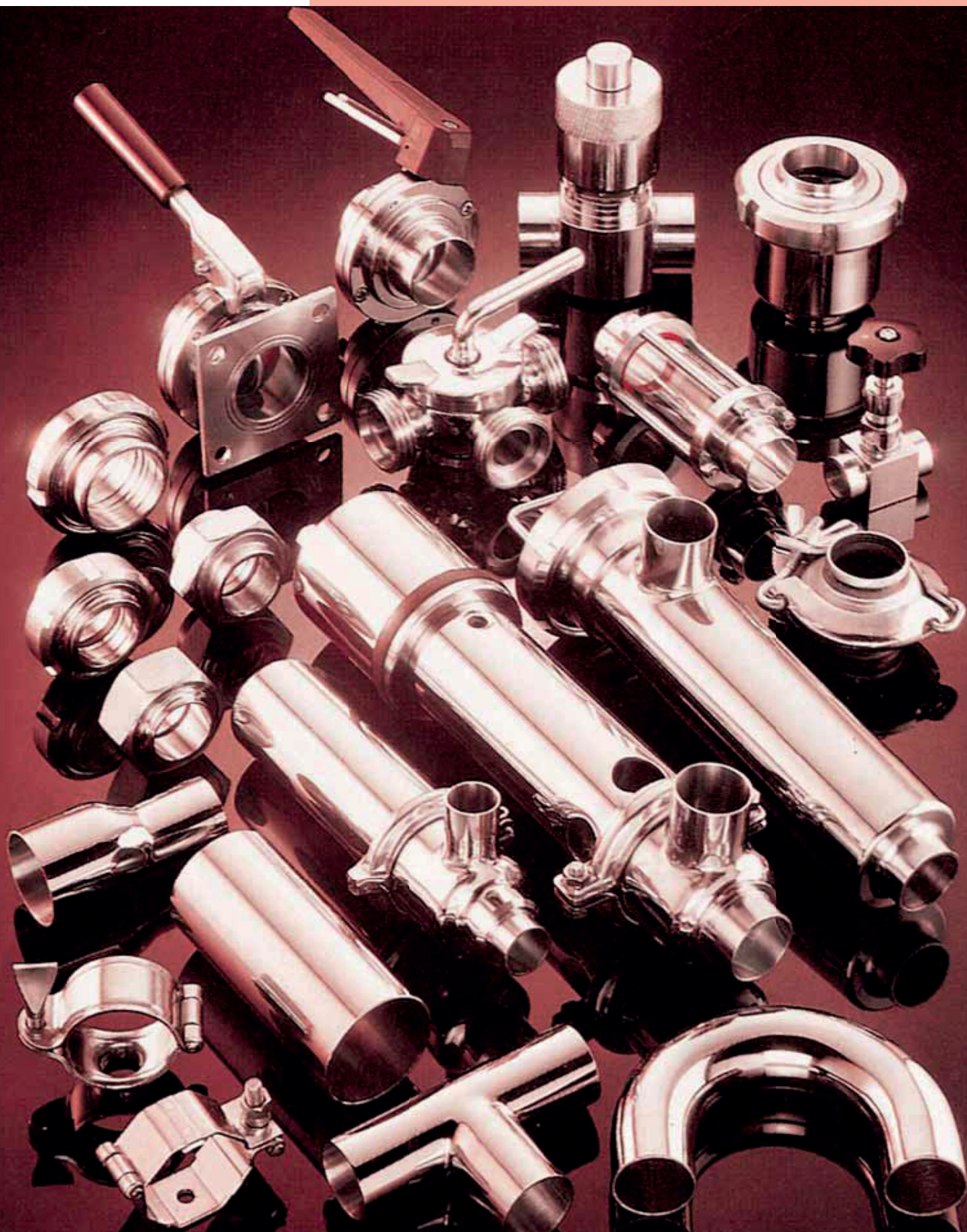


STASA

Suministros Industriales del Tajo, S.A.

Gama alimentaria de acero inoxidable





Tubo para industria alimentaria

Según DIN 11850 y EN-10217-7

Sin recocer: CC/CD

Con tratamiento térmico: BC/BD

Según ASTM A-270 (con tratamiento térmico)

Diámetro exterior			Peso (Kg/m)				
			Espesor (mm)				
mm	tolerancia S/DIN 11850	pulgadas	1.0	1.25	1.5	1.63	2.0
12	±0,1 mm (D4)		0,27 (1)				
12,7		1/2"		0,36			
13	±0,1 mm (D4)				0,43 (2)		
18	±0,1 mm (D4)		0,42 (1)				
19	±0,1 mm (D4)				0,66 (2)		
19,05		3/4"		0,54		0,71	
22	±0,11 mm (D4)		0,51 (1)				
23	±0,12 mm (D4)				0,81 (2)		
25,4		1"		0,73		0,96	
28	±0,14 mm (D4)		0,66 (1)				
29	±0,15 mm (D4)				1,03 (2)		
31,75		1 1/4"		0,92		1,22	
34	±0,17 mm (D4)		0,82 (1)				
35	±0,18 mm (D4)				1,26 (2)		
38					1,38 (*)		
38,1		1 1/2"		1,12		1,48	
40	±0,2 mm (D4)		0,97 (1)				
41	±0,21 mm (D4)				1,5 (2)		
50,8		2"		1,50	1,85 (*)	1,99	
52	±0,26 mm (D4)		1,26 (1)				
53	±0,27 mm (D4)				1,9 (2)		
63,5		2 1/2"			2,33 (*)	2,51	
70	±0,35 mm (D4)						3,43 (2)
76					2,80 (*)		
76,1		3"				3,02	
85	±0,43 mm (D4)						4,16 (2)
101,6		4"					5,02
104	±0,78 mm (D3)						5,03 (2)
129	±0,97 mm (D3)						6,36 (2)
154	±1,16 mm (D3)						7,49 (2)
204	±1,53 mm (D3)						10,12 (2)

Materiales stock: 304/304L, 316L. Sin recocer (CC)

(1) Serie 1 de la norma DIN 11850- Tolerancia espesor (TE): ±0,10 mm

(2) Serie 2 de la norma DIN 11850 | Hasta Ø 53 espesor TE: ±0,15 mm (T4)

Hasta Ø 70 - Ø 204 espesor TE: ±0,20 mm (T3)

(*) Corresponden con la norma IDF (FIL)

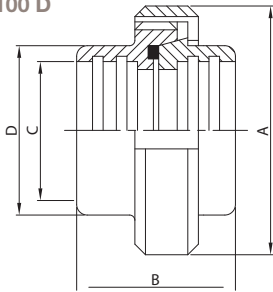


Accesorios para industria alimentaria

Según norma DIN-11851

Racor MR.

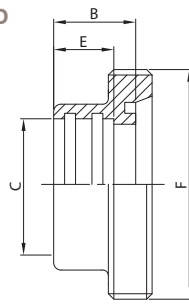
100 D



DN	A	B	C	D	gr
10	38,0	35,0	12,0	18,0	135
15	44,0	35,0	18,0	24,0	184
20	54,0	37,0	22,0	30,0	319
25	63,0	45,0	28,0	35,0	377
32	70,0	51,0	34,0	41,0	470
40	78,0	53,0	40,0	48,0	585
50	92,0	57,0	52,0	61,0	800
65	112,0	65,0	70,0	79,0	1.215
80	127,0	75,0	85,0	93,0	1.750
100	148,0	89,0	101,6	114,0	2.770
104	148,0	89,0	104,0	114,0	2.770

Racor Macho MR.

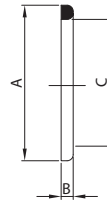
101 D



DN	B	C	E	F	gr
10	17,0	12,0	12,0	28-8	40
15	17,0	18,0	12,0	34-8	55
20	18,0	22,0	12,0	44-6	110
25	22,0	28,0	15,0	52-6	130
32	25,0	34,0	18,0	58-6	170
40	26,0	40,0	20,0	65-6	210
50	28,0	52,0	22,0	78-6	280
65	32,0	70,0	25,0	95-6	380
80	37,0	85,0	28,0	110-4	600
100	44,0	101,6	35,0	130-4	1.000
104	44,0	104,0	35,0	130-4	1.000

Junta Racor

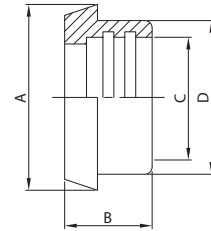
131 D



DN	A	B	C
10	20,0	4,0	12,0
15	26,0	4,0	18,0
20	33,0	4,0	23,0
25	40,0	5,0	30,0
32	46,0	5,0	36,0
40	52,0	5,0	42,0
50	64,0	5,0	54,0
65	81,0	5,0	71,0
80	95,0	5,0	85,0
100/104	114,0	5,0	104,0
125	142,0	6,0	130,0
150	167,0	6,0	155,0

Racor Casquillo MR.

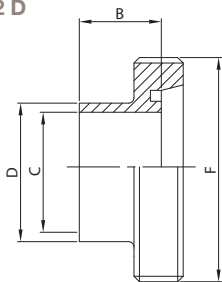
111 D



DN	A	B	C	D	gr
10	22,0	17,0	12,0	18,0	25
15	28,0	17,0	18,0	24,0	30
20	36,0	18,0	22,0	30,0	60
25	44,0	22,0	28,0	35,0	85
32	50,0	25,0	34,0	41,0	110
40	56,0	26,0	40,0	48,0	135
50	68,0	28,0	52,0	61,0	200
65	86,0	32,0	70,0	79,0	295
80	100,0	37,0	85,0	93,0	380
100	121,0	44,0	101,6	114,0	780
104	121,0	44,0	104,0	114,0	780

Racor Macho SR.

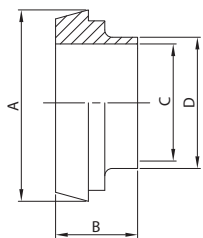
102 D



DN	B	C	D	F	gr
10	17,0	10,0	12,0	28-8	30
15	17,0	16,0	18,0	34-8	50
20	18,0	20,0	22,0	44-6	100
25	22,0	25,0	28,0	52-6	120
32	25,0	31,0	34,0	58-6	150
40	26,0	37,0	40,0	65-6	180
50	28,0	49,0	52,0	78-6	240
65	32,0	66,0	70,0	95-6	340
80	37,0	81,0	85,0	110-4	540
100	44,0	97,6	101,6	130-4	740
104	44,0	100,0	104,0	130-4	740

Racor Casquillo SR.

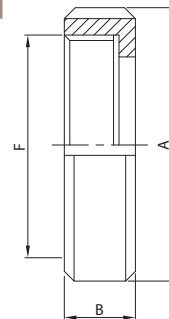
112 D



DN	A	B	C	D	gr
10	22,0	17,0	10,0	12,0	20
15	28,0	17,0	16,0	18,0	30
20	36,0	18,0	20,0	22,0	60
25	44,0	22,0	25,0	28,0	90
32	50,0	25,0	31,0	34,0	100
40	56,0	26,0	37,0	40,0	120
50	68,0	28,0	49,0	52,0	180
65	86,0	32,0	66,0	70,0	280
80	100,0	37,0	81,0	85,0	380
100	121,0	44,0	97,6	101,6	660
104	121,0	44,0	100,0	104,0	660

Tuerca

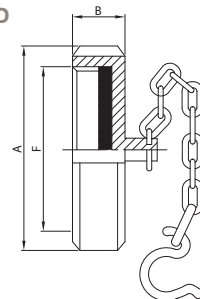
121 D



DN	A	B	F	gr
10	38,0	18,0	28-8	70
15	44,0	18,0	34-8	98
20	54,0	21,0	44-6	150
25	63,0	21,0	52-6	160
32	70,0	21,0	58-6	190
40	78,0	21,0	65-6	240
50	92,0	22,0	78-6	320
65	112,0	25,0	95-6	540
80	127,0	30,0	110-4	770
100	148,0	31,0	130-4	990
125	178,0	35,0	160-4	1.400
150	210,0	41,0	190-4	1.800

Tuerca Ciega + Cad.

124 D



DN	A	B	F	gr
10	38,0	18,0	28-8	100
15	44,0	18,0	34-8	120
20	54,0	21,0	44-6	180
25	63,0	21,0	52-6	200
32	70,0	21,0	58-6	250
40	78,0	21,0	65-6	290
50	92,0	22,0	78-6	370
65	112,0	25,0	95-6	700
80	127,0	30,0	110-4	970
100	148,0	31,0	130-4	1.400
125	178,0	35,0	160-4	1.800
150	210,0	41,0	190-4	2.200

Se fabrican con piezas estampadas en caliente o con material laminado. Las roscas se han realizado con mucho esmero para eliminar el gripaje durante su acoplamiento. Las partes finales de las roscas se eliminan con operaciones mecánicas para evitar accidentes cuando se manejan

Acabado estándar: pulido exterior y satinado interior.

Calidad del material: De DN 25 a DN 100 = A-304 L. De DN 10 a DN 100 = A-316 L.

Bajo consulta se pueden suministrar estos accesorios s/normas SMS o IDF (FIL)

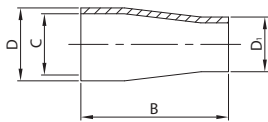


Accesorios para industria alimentaria

Según norma DIN-11851

Reducción Conc. EL.

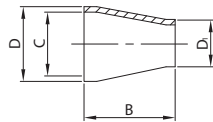
170 L



DN	B	C	D	D ₁	gr
18/12	67,0	15,5	18,0	12,0	30
22/12	67,0	19,5	22,0	12,0	40
22/18	67,0	19,5	22,0	18,0	40
28/12	67,0	25,0	28,0	12,0	50
28/18	67,0	25,0	28,0	18,0	50
28/22	67,0	25,0	28,0	22,0	50
34/12	67,0	31,0	34,0	12,0	80
34/18	67,0	31,0	34,0	18,0	80
34/22	98,0	31,0	34,0	22,0	90
34/28	88,0	31,0	34,0	28,0	90
40/12	67,0	37,0	40,0	12,0	100
40/18	67,0	37,0	40,0	18,0	110
40/22	67,0	37,0	40,0	22,0	110
40/28	98,0	37,0	40,0	28,0	120
40/34	88,0	37,0	40,0	34,0	120
52/28	134,0	49,0	52,0	28,0	155
52/34	105,0	49,0	52,0	34,0	210
52/40	98,0	49,0	52,0	40,0	180
70/34	120,0	66,0	70,0	34,0	220
70/40	120,0	66,0	70,0	40,0	220
70/52	105,0	66,0	70,0	52,0	270
85/40	147,0	81,0	85,0	40,0	440
85/52	125,0	81,0	85,0	52,0	430
85/70	105,0	81,0	85,0	70,0	500
101/52	155,0	97,6	101,6	52,0	560
101/70	127,0	97,6	101,6	70,0	550
101/85	120,0	97,6	101,6	85,0	550
104/52	165,0	100,0	104,0	52,0	530
104/70	127,0	100,0	104,0	70,0	525
104/85	120,0	100,0	104,0	85,0	550

Reducción Conc. SR.

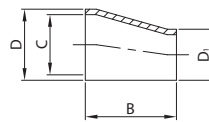
169 L



DN	B	C	D	D ₁	gr
18/12	38,0	15,5	18,0	12,0	30
22/12	38,0	19,5	22,0	12,0	40
22/18	38,0	19,5	22,0	18,0	40
28/12	38,0	25,0	28,0	12,0	50
28/18	38,0	25,0	28,0	18,0	50
28/22	38,0	25,0	28,0	22,0	50
34/28	67,0	31,0	34,0	28,0	60
40/28	67,0	37,0	40,0	28,0	60
40/34	67,0	37,0	40,0	34,0	60
52/28	67,0	49,0	52,0	28,0	100
52/34	67,0	49,0	52,0	34,0	100
52/40	67,0	49,0	52,0	40,0	110
70/40	71,0	66,0	70,0	40,0	120
70/52	67,0	66,0	70,0	52,0	160
85/52	79,0	81,0	85,0	52,0	190
85/70	67,0	81,0	85,0	70,0	240
101/52	110,0	97,6	101,6	52,0	300
101/70	67,0	97,6	101,6	70,0	290
101/85	67,0	97,6	101,6	85,0	280
104/52	110,0	100,0	104,0	52,0	300
104/70	67,0	100,0	104,0	70,0	290
104/85	67,0	100,0	104,0	85,0	280
85/40	88,0	81,0	85,0	40,0	180
85/52	67,0	81,0	85,0	52,0	190
85/70	67,0	81,0	85,0	70,0	240
101/52	105,0	97,6	101,6	52,0	300
101/70	72,0	97,6	101,6	70,0	290
101/85	67,0	97,6	101,6	85,0	280
104/52	107,0	100,0	104,0	52,0	300
104/70	72,0	100,0	104,0	70,0	290
104/85	67,0	100,0	104,0	85,0	280

Reducción Exc. SR.

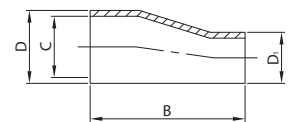
179 L



DN	B	C	D	D ₁	gr
34/28	67,0	31,0	34,0	28,0	60
40/28	67,0	37,0	40,0	28,0	60
40/34	67,0	37,0	40,0	34,0	60
52/28	68,0	49,0	52,0	28,0	100
52/34	67,0	49,0	52,0	34,0	100
52/40	67,0	49,0	52,0	40,0	110
70/40	71,0	66,0	70,0	40,0	120
70/52	67,0	66,0	70,0	52,0	160
85/52	79,0	81,0	85,0	52,0	190
85/70	67,0	81,0	85,0	70,0	240
101/52	110,0	97,6	101,6	52,0	300
101/70	67,0	97,6	101,6	70,0	290
101/85	67,0	97,6	101,6	85,0	280
104/52	110,0	100,0	104,0	52,0	300
104/70	67,0	100,0	104,0	70,0	290
104/85	67,0	100,0	104,0	85,0	280

Reducción Exc. EL.

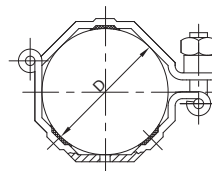
180 L



DN	B	C	D	D ₁	gr
34/28	102,0	31,0	34,0	28,0	120
40/28	110,0	37,0	40,0	28,0	120
40/34	102,0	37,0	40,0	34,0	130
52/28	130,0	49,0	52,0	28,0	160
52/34	120,0	49,0	52,0	34,0	200
52/40	110,0	49,0	52,0	40,0	160
70/40	153,0	66,0	70,0	40,0	230
70/52	130,0	66,0	70,0	52,0	240
85/52	146,0	81,0	85,0	52,0	430
85/70	120,0	81,0	85,0	70,0	500
101/52	150,0	97,6	101,6	52,0	560
101/70	153,0	97,6	101,6	70,0	550
101/85	118,0	97,6	101,6	85,0	550
104/52	148,0	100,0	104,0	52,0	530
104/70	153,0	100,0	104,0	70,0	525
104/85	118,0	100,0	104,0	85,0	550

Abrazadera Octog. EL.

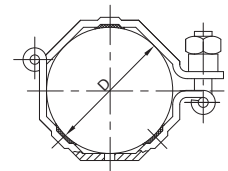
094 L



DN	D	gr
28	28,0	110
34	34,0	120
40	40,0	130
52	52,0	160
70	70,0	210
85	85,0	240
104	104,0	270

Abrazadera Octog. EL.

094 L



Para tubo A-270

DN	D	gr
25	25,4	110
38	38,1	130
51	50,8	160
63	63,5	200
76	76,1	220
101	101,6	270

Accesorios para soldar obtenidos a partir de tubos soldados eléctricamente, laminados en frío y solubilizados, calibrados interior y exteriormente.

Acabado estándar: pulido exterior y satinado interior, grano 120.

Calidad del material: AISI-304 L y 316-L.

Bajo consulta se pueden suministrar estos accesorios s/normas SMS o IDF (FIL)

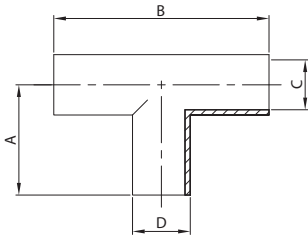


Accesorios para industria alimentaria

Según norma DIN-11851

Te Mandrinar

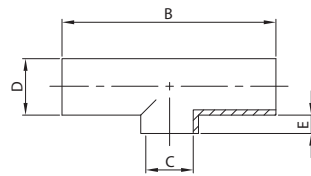
200 D



DN	A	B	C	D	gr
10	26,0	52,0	10,0	12,0	35
15	35,0	70,0	16,0	18,0	75
20	40,0	80,0	20,0	22,0	95
25	50,0	100,0	25,0	28,0	120
32	55,0	110,0	31,0	34,0	175
40	60,0	120,0	37,0	40,0	240
50	70,0	140,0	49,0	52,0	310
65	80,0	160,0	66,0	70,0	650
80	90,0	180,0	81,0	85,0	1.070
100	100,0	200,0	97,6	101,6	1.850
104	100,0	200,0	100,0	104,0	1.850
125	124,0	248,0	125,0	129,0	2.250

Te Soldar

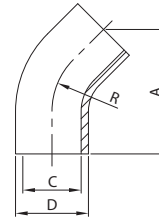
240 D



DN	B	C	D	E	gr
10	52,0	10,0	12,0	3,0	35
15	70,0	16,0	18,0	3,0	75
20	80,0	20,0	22,0	3,0	95
25	100,0	25,0	28,0	3,0	120
32	110,0	31,0	34,0	3,0	175
40	120,0	37,0	40,0	3,0	240
50	140,0	49,0	52,0	3,0	310
65	160,0	66,0	70,0	3,0	650
80	180,0	81,0	85,0	3,0	1.070
100	200,0	97,6	101,6	3,0	1.850
104	200,0	100,0	104,0	3,0	1.850
125	248,0	125,0	129,0	9,5	2.000

Codo 45° EL.

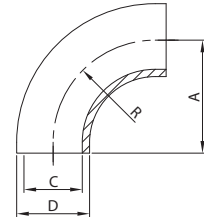
300 L



DN	A	C	D	R	gr
12	45,0	10,0	12,0	26,0	40
18	60,0	16,0	18,0	35,0	50
22	65,0	20,0	22,0	40,0	60
28	73,0	25,0	28,0	50,0	62
34	83,0	31,0	34,0	55,0	85
40	89,0	37,0	40,0	60,0	120
52	103,0	49,0	52,0	70,0	190
70	108,0	66,0	70,0	80,0	390
85	120,0	81,0	85,0	90,0	470
101	137,0	97,6	101,6	110,0	930
104	137,0	100,0	104,0	100,0	930

Codo 90° ES.

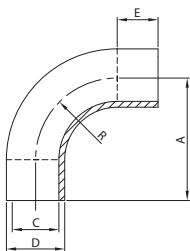
310 D



DN	A	C	D	R	gr
10	26,0	10,0	12,0	26,0	18
15	35,0	16,0	18,0	35,0	20
20	40,0	20,0	22,0	40,0	50
25	50,0	25,0	28,0	50,0	65
32	55,0	31,0	34,0	55,0	100
40	60,0	37,0	40,0	60,0	150
50	70,0	49,0	52,0	70,0	190
65	80,0	66,0	70,0	80,0	410
80	90,0	81,0	85,0	90,0	530
100	110,0	97,6	101,6	110,0	810
104	100,0	100,0	104,0	100,0	810
125	188,0	125,0	129,0	188,0	900

Codo 90° EM.

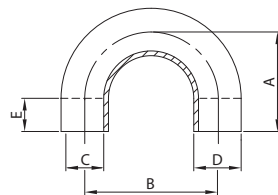
350 D



DN	A	C	D	E	R	gr
10	38,0	10,0	12,0	12,0	26,0	30
15	47,0	16,0	18,0	12,0	35,0	55
20	52,0	20,0	22,0	12,0	40,0	60
25	70,0	25,0	28,0	20,0	50,0	110
32	78,0	31,0	34,0	23,0	55,0	160
40	85,0	37,0	40,0	25,0	60,0	215
50	97,0	49,0	52,0	27,0	70,0	300
65	110,0	66,0	70,0	30,0	80,0	570
80	123,0	81,0	85,0	33,0	90,0	780
100	150,0	97,6	101,6	40,0	110,0	1.200
104	140,0	100,0	104,0	40,0	100,0	1.200

Codo 180° EL.

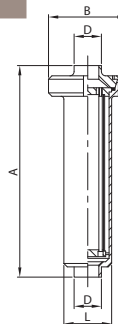
390 L



DN	A	B	C	D	E	gr
12	38,0	52,0	10,0	12,0	50,0	60
18	47,0	70,0	16,0	18,0	50,0	110
22	52,0	80,0	20,0	22,0	50,0	120
28	100,0	100,0	25,0	28,0	50,0	185
34	105,0	108,0	31,0	34,0	50,0	240
40	110,0	120,0	37,0	40,0	50,0	350
52	120,0	140,0	49,0	52,0	50,0	410
70	130,0	170,0	66,0	70,0	50,0	970
85	132,5	184,0	81,0	85,0	50,0	1.500
101	140,0	220,0	97,6	101,6	50,0	2.400
104	140,0	220,0	100,0	104,0	50,0	2.400

Filtro Línea EL.

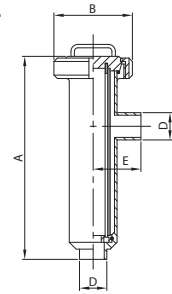
400 L



DN	A	B	D	L	gr
28	320,0	112,0	28,0	70,0	3.000
34	320,0	112,0	34,0	70,0	3.000
40	320,0	112,0	40,0	70,0	3.000
52	420,0	112,0	52,0	70,0	3.300
70	516,0	127,0	70,0	85,0	4.650
85	575,0	148,0	85,0	102,0	5.700
101	700,0	148,0	101,6	129,0	7.000
104	700,0	148,0	104,0	129,0	7.000

Filtro 90° EL.

410 L



DN	A	B	D	E	gr
28	306,0	112,0	28,0	70,0	3.100
34	306,0	112,0	34,0	70,0	3.100
40	306,0	112,0	40,0	70,0	3.100
52	406,0	112,0	52,0	72,0	3.400
70	503,0	127,0	70,0	85,0	4.800
85	561,0	148,0	85,0	96,0	5.900
101	662,0	148,0	101,6	117,0	7.200
104	662,0	148,0	104,0	117,0	7.200

Accesorios para soldar obtenidos a partir de tubos soldados eléctricamente, laminados en frío y solubilizados, calibrados interior y exteriormente.

Acabado estándar: pulido exterior y satinado interior, grano 120.

Calidad del material: AISI--304 L y 316-L.

Bajo consulta se pueden suministrar estos accesorios s/normas SMS o IDF (FIL)

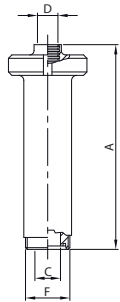


Accesorios para industria alimentaria

Según norma DIN-11851

Filtro Línea ER./C. MR.

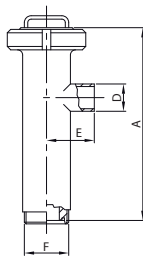
401 D



DN	A	C	D	F	gr
25	320,0	25,0	28,0	52-6	3.130
32	320,0	31,0	34,0	58-6	3.170
40	320,0	37,0	40,0	65-6	3.210
50	420,0	49,0	52,0	78-6	3.580
65	521,0	66,0	70,0	95-6	5.030
80	584,0	81,0	85,0	110-4	6.300
100	690,0	97,6	101,6	130-4	8.000
104	690,0	100,0	104,0	130-4	8.000

Filtro 90° ER./EL.

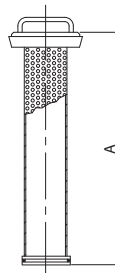
411 D



DN	A	D	E	F	gr
25	300,0	28,0	70,0	52-6	3.230
32	300,0	34,0	70,0	58-6	3.270
40	300,0	40,0	70,0	65-6	3.310
50	398,0	52,0	72,0	78-6	3.680
65	495,0	70,0	85,0	95-6	5.180
80	553,0	85,0	96,0	110-4	6.700
100	642,0	101,6	117,0	130-4	8.200
104	642,0	104,0	117,0	130-4	8.200

Cartucho Filtro 90°

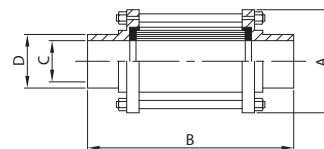
410 410



DN	A
25/40	278,0
51/52	378,0
63/70	473,0
76/85	527,0
101/104	636,0

Mirilla EL.

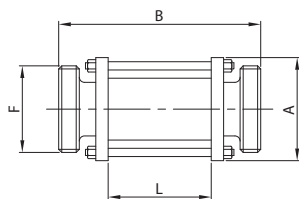
450 L



DN	A	B	C	D	gr
28	60,0	143,0	25,0	28,0	400
34	65,0	149,0	31,0	34,0	500
40	70,0	153,0	37,0	40,0	680
52	85,0	157,0	49,0	52,0	860
70	100,0	163,0	66,0	70,0	1.090
85	115,0	169,0	81,0	85,0	1.280
101	140,0	173,0	97,6	101,6	2.760
104	140,0	173,0	100,0	104,0	2.760

Mirilla ER./ER.

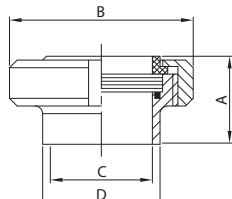
452 D



DN	A	B	F	L	gr
25	60,0	157,0	52-6	83,0	610
32	65,0	157,0	58-6	83,0	700
40	70,0	157,0	65-6	83,0	920
50	85,0	157,0	78-6	83,0	1.230
65	100,0	161,0	95-6	83,0	1.520
80	115,0	171,0	110-4	83,0	1.770
100	140,0	171,0	130-4	83,0	3.370
104	140,0	171,0	130-4	83,0	3.370

Mirilla Plana ES.

441 D



DN	A	B	F	L	gr
25	35,0	63,0	25,0	28,0	350
32	38,0	70,0	31,0	34,0	420
40	39,0	78,0	37,0	40,0	530
50	42,0	92,0	49,0	52,0	730
65	47,0	112,0	66,0	70,0	1.110
80	52,0	127,0	81,0	85,0	1.590
100	62,0	148,0	97,6	101,6	2.380
104	62,0	148,0	100,0	104,0	2.380

Revestimiento Mesh

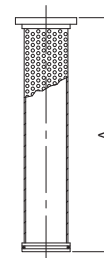
400 612



DN	MESH
25/40	100/200 300 400 500
51/52	100/200 300 400 500
63/70	100/200 300 400 500
76/85	100/200 300 400 500
101/104	100/200 300 400 500

Cartucho Filtro Línea

400 410



DN	A
25/40	271,0
51/52	371,0
63/70	466,0
76/85	516,0
101/104	621,0

Filtros:

- Las piezas filtrantes se pueden extraer fácilmente.
- Producción estandar: cartuchos filtrantes de chapa con orificios de 1 mm. Bajo pedido, se pueden suministrar con orificios de 0,5 mm, 2 mm o 3 mm y, eventualmente, con cobertura de red metálica de 80 a 500 mesh.
- Acabado estandar: pulido exterior y satinado interior grano120. Bajo pedido, se pueden suministrar otros acabados.
- Máxima presión de trabajo: 5 Bar.

Mirillas:

- Piezas que permiten observar el fluido a través de la parte visible. El cristal es de pirex y puede soportar presiones de hasta 15 a 20 Kgs/cm²
- Calidad del material: A-304 L y A-316 L

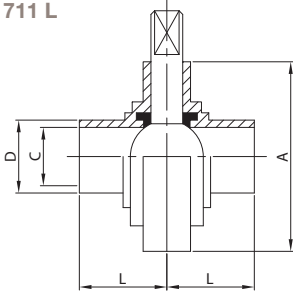


Accesorios para industria alimentaria

Según norma DIN-11851

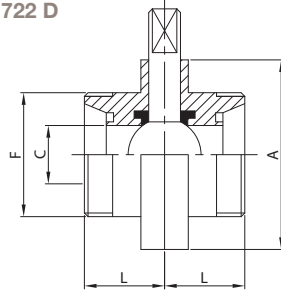
V. Mariposa EL./EL.

711 L



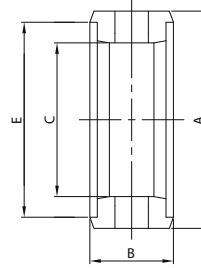
V. Mariposa ER./ER.

722 D



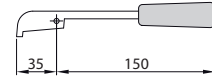
Junta Válvula Mariposa

700 02



Maneta con Blocaje

7M2



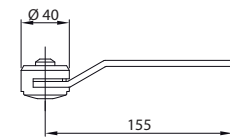
DN	A	C	D	L	gr
28	79,0	25,0	28,0	32,0	725
34	85,0	31,0	34,0	38,0	805
40	92,0	37,0	40,0	38,0	990
52	105,0	49,0	52,0	40,0	1.270
70	125,0	66,0	70,0	41,0	1.755
85	137,0	81,0	85,0	42,0	2.300
101	157,0	97,6	101,6	44,0	2.300
104	157,0	100,0	104,0	44,0	2.300
129	180,0	124,0	129,0	40,0	4.900
154	212,0	149,0	154,0	40,0	6.200
204	256,0	199,0	204,0	45,0	9.300
254	306,0	249,0	254,0	45,0	11.900

DN	A	C	F	L	gr
25	79,0	25,0	52-6	32,0	965
32	85,0	31,0	58-6	34,0	1.225
40	92,0	37,0	65-6	38,0	1.450
50	105,0	49,0	78-6	38,0	1.870
65	125,0	66,0	95-6	38,0	2.255
80	137,0	81,0	110-4	41,5	3.200
100	157,0	97,6	130-4	44,0	3.940
104	157,0	100,0	130-4	44,0	3.940

DIAM.	A	B	C	E
25/28	43,6	24,0	27,6	37,0
34/38	52,4	25,0	35,4	45,8
40	55,5	25,0	38,7	48,9
51/52	65,2	25,0	48,8	57,7
60/63	76,2	25,0	59,2	68,6
70/76	88,7	27,0	69,5	81,1
85	99,0	27,0	79,8	91,2
101/104	119,0	27,0	100,6	111,2

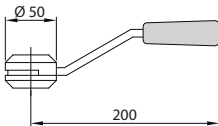
Maneta de Regul. 4 Pos.

7M12



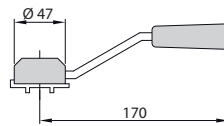
Maneta de Regul. 2 Pos.

7M3



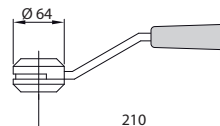
Maneta de Regul. 7 Pos.

7M9



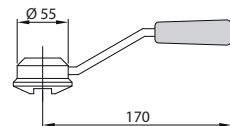
Maneta de Regul. 10 Pos.

7M4



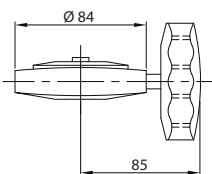
Maneta de Regul. 20 Pos.

7M5



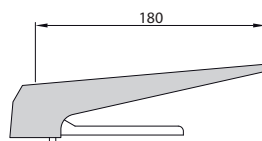
Cabezal de Reg. Microm.

7M6



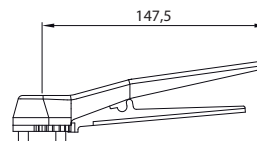
Maneta a Gatillo ABS

7M8



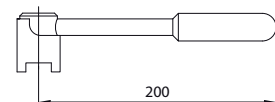
Man. a Gatillo 7 Pos.

7M11



Maneta V. M. 125/254

7M7



Válvulas de mariposa:

- Obtenidas a partir de piezas estampadas en caliente y solubilizadas. A-304-L y A-316-L.
- Obturadores obtenidos de piezas de acero inoxidable AISI 316L estampadas en caliente y solubilizada, trabajadas mecánicamente en todas las superficies y rectificadas en las partes giratorias.
- Aplicación estándar de 2 camisas de PTFE en los ejes de los obturadores para eliminar el rozamiento en las rotaciones.
- Juntas producidas mediante estampado bajo compresión y con elastómeros de óptima calidad. Estándar silicona; bajo pedido, EPDM, viton, viton revestido PTFE, PTFE + silicona.
- Posibilidad de intercambio entre las distintas unificaciones.

- Amplia gama de mandos manuales para satisfacer exigencias de las instalaciones.
- Simplicidad, seguridad y fiabilidad de maniobras.
- Mandos neumáticos horizontales y verticales de simple efecto, doble efecto y de regulación del flujo que se pueden equipar con micro-sensores, microinterruptor (eléctrico o neumático), electroválvula (24 V CA, 24 V CC, 48 V CA), conector.
- Producción estándar: de DN 25 a DN 250.
- Acabado estándar: pulido exterior y satinado interior grano 120. Bajo pedido, se pueden suministrar otros acabados.
- Máxima presión de trabajo: 7 bares; para juntas en PTFE: 2 bares.
- Suministro estándar de maneta, modelo 7 M8.

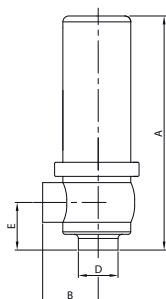


Accesorios para industria alimentaria

Según norma DIN-11851

Válvula Seguridad EL.

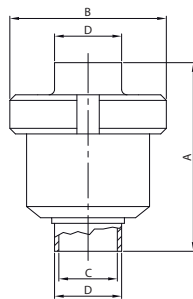
660 L



DN	A	B	D	E	gr
28	190,0	45,0	28,0	30,0	2.185
34	233,0	55,0	34,0	38,0	2.160
40	234,0	56,0	40,0	39,0	2.280
52	245,0	65,0	52,0	45,0	2.910
70	270,0	80,0	70,0	57,0	4.650
85	286,0	95,0	85,0	66,0	6.200

Válvula Retención ES.

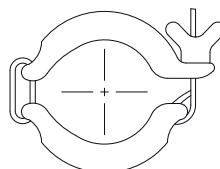
641 L



DN	A	B	C	D	gr
25	87,0	78,0	25,0	28,0	1.100
32	89,0	92,0	31,0	34,0	1.650
40	97,0	92,0	37,0	40,0	1.530
50	101,5	112,0	49,0	52,0	2.440
65	119,5	138,0	66,0	70,0	4.010
80	132,0	148,0	81,0	85,0	5.340
100	118,0	148,0	97,6	101,6	6.330
104	118,0	148,0	100,0	104,0	6.330

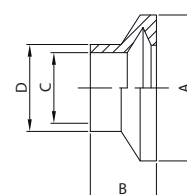
Abrazadera Eno

121 E



Enlace Eno

102 E

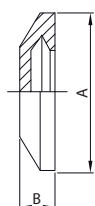


DN	gr
40	200
50	250
60	300
70	350
80	400
100	450

DN	A	B	C	D	gr
40	65,0	25,0	37,0	40,0	130
50	75,0	30,0	49,0	52,0	160
60	86,0	32,0	57,0	60,0	210
70	98,0	38,0	66,0	70,0	260
80	109,0	38,0	81,0	85,0	300
100	128,0	38,0	97,4	101,6	350

Tapón Eno

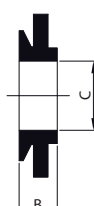
104 E



DN	A	B	gr
40	65,0	15,0	100
50	75,0	17,0	150
60	86,0	17,0	250
70	98,0	17,0	300
80	109,0	17,0	325
100	128,0	17,0	350

Junta Enlace

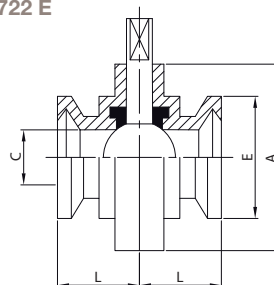
131 E



DN	B	C
40	13,0	40,0
50	13,0	50,0
60	13,0	60,0
70	14,0	70,0
80	14,0	80,0
100	14,0	100,0

V. Mariposa Eno/Eno

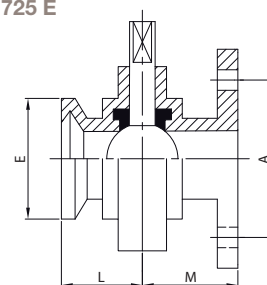
722 E



DN	A	C	E	L	gr
40	92,0	37,0	65,0	38,0	1.450
50	105,0	49,0	75,0	40,0	1.870
60	112,0	57,0	86,0	40,0	2.300
70	125,0	66,0	98,0	40,0	2.755
80	137,0	81,0	108,0	41,0	3.200
100	157,0	97,4	129,0	44,0	3.940

V. Mariposa Eno/BR.

725 E



DN	A	E	L	M	gr
40	90,0	65,0	38,0	47,5	2.470
50	110,0	75,0	40,0	49,5	2.920
60	130,0	86,0	40,0	49,5	3.480
70	130,0	98,0	40,0	50,5	3.980
80	150,0	108,0	41,0	51,5	5.400
100	170,0	129,0	44,0	53,5	6.390

Válvulas de retención:

- Fabricación sólida y robusta, puesto que se obtienen a partir de un lingote de acero inoxidable. AISI 304-L ó 316-L
- Amplia abertura del diafragma para permitir el paso de sustancias sólidas.
- Junta de PTFE, bajo pedido, otros elastómeros.
- Equipadas con muelles de baja presión que permiten el funcionamiento de la válvula tanto en posición vertical como horizontal.
- Acabado estandar: pulido exterior y satinado interior grano 120. Bajo pedido, se pueden suministrar otros acabados.
- Máxima presión de trabajo: 10 Bar.

Válvulas de seguridad:

- Tuerca de regulación de la presión situada en el interior del cuerpo de la válvula para impedir que se produzcan maniobras accidentales.
- Acabado estandar: pulido exterior y satinado interior grano 120. Bajo pedido, se pueden suministrar otros acabados.
- Fabricadas en material A-304-L y A-316-L
- Se puede regular de 0 a 5 Bar.
- Bajo pedido se pueden regular hasta 12 Bar.

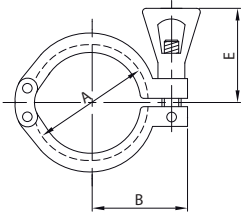


Accesorios para industria farmacéutica

Gama CLAMP

Abrazadera

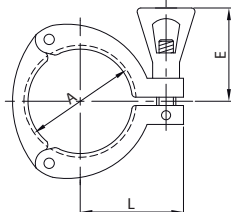
K12



DN	A	E	L	gr
1/2" 12	27,0	35,0	27,0	120
3/4" 19	27,0	35,0	27,0	120

Abraz. 3 Mordazas

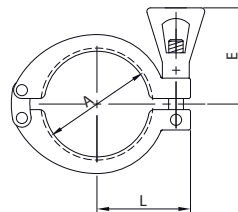
K13



DN	A	E	L	gr
1" 25	53,4	53,0	45,0	270
1 1/2" 38	53,4	53,0	45,0	270
2" 51	67,0	53,0	51,5	330
2 1/2" 63	80,4	53,0	58,2	395
3" 76	94,0	53,0	65,0	425
4" 101	122,0	53,0	81,0	540

Abrazadera

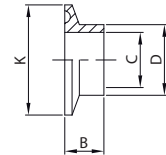
K15



DN	A	E	L	gr
1" 25	54,5	53,0	43,7	220
1 1/2" 38	54,5	53,0	43,7	220
2" 51	68,0	53,0	50,5	260
2 1/2" 63	81,5	53,0	57,2	330
3" 76	95,0	53,0	64,0	400
4" 101	123,0	53,0	78,0	500

Enlace Corto SR.

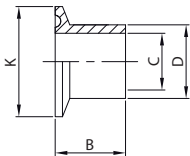
K14 S



DN	B	C	D	K	gr
1/2" 12	12,7	9,4	12,7	25,0	16
3/4" 19	12,7	15,7	19,0	25,0	14
1" 25	12,7	22,1	25,4	50,5	60
1 1/2" 38	12,7	34,8	38,1	50,5	40
2" 51	12,7	47,5	50,8	64,0	60
2 1/2" 63	12,7	60,2	63,5	77,5	75
3" 76	12,7	72,9	76,2	91,0	95
4" 101	15,8	97,4	101,6	119,0	180
4" 104	15,8	100,0	104,0	119,0	180

Enlace SR.

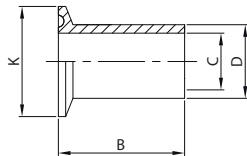
K14 W



DN	B	C	D	K	gr
1/2" 12	21,0	9,4	12,7	25,0	19
3/4" 19	21,0	15,7	19,0	25,0	20
1" 25	28,6	22,1	25,4	50,5	80
1 1/2" 38	28,6	34,8	38,1	50,5	60
2" 51	28,6	47,5	50,8	64,0	95
2 1/2" 63	28,6	60,2	63,5	77,5	115
3" 76	28,6	72,9	76,2	91,0	150
4" 101	28,6	97,4	101,6	119,0	250
4" 104	28,6	100,0	104,0	119,0	250
5" 127	28,6	122,0	127,0	144,4	320
6" 152	28,6	147,4	152,4	166,0	400
8" 203	28,6	198,2	203,2	217,0	500

Enlace SR.

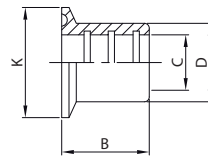
K14 WL



DN	B	C	D	K	gr
1" 25	76,2	22,1	25,4	50,5	120
1 1/2" 38	76,2	34,8	38,1	50,5	130
2" 51	76,2	47,5	50,8	64,0	180
2 1/2" 63	76,2	60,2	63,5	77,5	280
3" 76	101,6	72,9	76,2	91,0	380
4" 101	101,6	97,4	101,6	119,0	560
4" 104	101,6	100,0	104,0	119,0	560

Enlace MR.

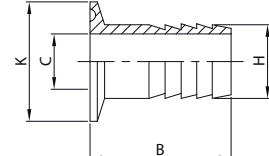
K14 R



DN	B	C	D	K	gr
1" 25	19,0	25,4	29,6	50,5	60
1 1/2" 38	28,6	38,1	42,6	50,5	65
2" 51	33,4	50,8	55,8	64,0	105
2 1/2" 63	35,0	63,5	68,8	77,5	145
3" 76	36,5	76,2	82,0	91,0	190
4" 101	38,0	101,6	110,0	119,0	300

M. Manguera E. SM.

K14 RHA



DN	B	C	H	K	gr
1/2" 12	38,1	9,5	13,7	25,0	26
3/4" 19	38,1	15,7	21,3	25,0	40
1" 25	42,9	20,6	25,4	50,5	70
1 1/2" 38	42,9	33,3	38,1	50,5	140
2" 51	58,7	46,0	50,8	64,0	250
2 1/2" 63	59,5	58,7	63,5	77,5	370
3" 76	78,6	72,0	76,2	91,0	505
4" 101	86,5	97,4	101,6	119,0	685

- Obtenidos a partir de piezas estampadas en caliente y solubilizadas, o de material laminado. Cierre rápido en conformidad con las normas 3-A.
- **Producción estandar:** 1/2"-4"; bajo pedido, dimensiones hasta 8". Bajo pedido se pueden fabricar según normas ISO.

- **Calidad del material:** Enlaces: A-316-L; Abrazaderas: A-304; Juntas: EPDM (K40E), SILICONA (K40S), PTFE (K40T), VITON (K40V). Acabado estandar: pulido exterior y satinado interior, gr 150.

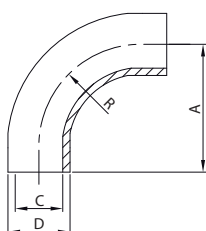


Accesorios para industria farmacéutica

Gama CLAMP

Codo 90° EM.

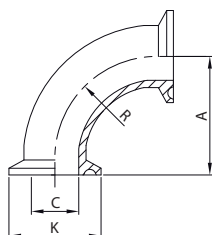
W2C



DN	A	C	D	R	gr
1/2" 12	76,2	9,4	12,7	44,4	56
3/4" 19	76,2	15,7	19,0	66,5	95
1" 25	52,4	22,1	25,4	38,1	160
1 1/2" 38	74,6	34,8	38,1	57,2	180
2" 51	103,2	47,5	50,8	76,2	340
2 1/2" 63	131,8	60,2	63,5	95,3	460
3" 76	160,3	72,9	76,2	114,3	700
4" 101	211,1	97,4	101,6	152,4	1.300

Codo 90° E. SM.

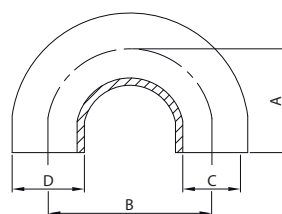
K2C



DN	A	C	K	R	gr
1/2" 12	88,8	9,4	25,0	44,4	90
3/4" 19	88,8	15,7	25,0	66,5	120
1" 25	50,8	22,1	50,5	38,1	170
1 1/2" 38	69,9	34,8	50,5	57,2	200
2" 51	88,9	47,5	64,0	76,2	370
2 1/2" 63	108,0	60,2	77,5	95,3	500
3" 76	127,0	72,9	91,0	114,3	910
4" 101	168,3	97,4	119,0	152,4	1.660

Codo 180° EL.

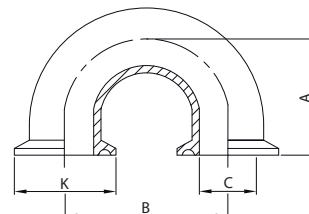
W3C



DN	A	B	C	D	gr
1" 25	86,5	74,0	22,1	25,4	170
1 1/2" 38	102,0	105,0	34,8	38,1	320
2" 51	125,5	148,0	47,5	50,8	500
2 1/2" 63	140,0	160,0	60,2	63,5	740
3" 76	147,0	167,0	72,9	76,2	1.180
4" 101	150,0	220,0	97,4	101,6	1.980

Codo 180° E. SM.

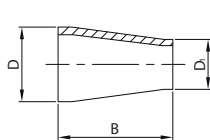
K3C



DN	A	B	C	K	gr
1" 25	99,2	74,0	22,1	50,5	340
1 1/2" 38	114,7	105,0	34,8	50,5	400
2" 51	138,2	148,0	47,5	64,0	740
2 1/2" 63	152,7	160,0	60,2	77,5	1.000
3" 76	159,7	167,0	72,9	91,0	1.820
4" 101	165,8	220,0	97,4	119,0	3.320

Reducción Conc. EL.

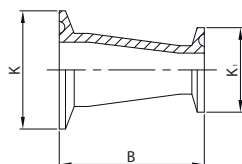
W31



DN	A	D	D ₁	gr
3/4"-1/2" 19/12	25,4	19,0	12,7	50
1"-1/2" 25/12	25,4	25,4	12,7	70
1"-3/4" 25/19	25,4	25,4	19,0	80
1 1/2"-1/2" 38/12	50,8	38,1	12,7	90
1 1/2"-3/4" 38/19	50,8	38,1	19,0	90
1 1/2"-1" 38/25	67,0	38,1	25,4	100
2"-1 1/2" 51/38	67,0	50,8	38,1	140
2 1/2"-2" 63/51	67,0	63,5	50,8	160
3"-2" 76/51	67,0	76,2	50,8	180
3"-2 1/2" 76/63	67,0	76,2	63,5	220
4"-3" 101/76	67,0	101,6	76,2	280

Reducción Conc. E. SM.

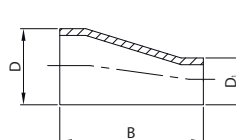
K31



DN	B	K	K ₁	gr
3/4"-1/2" 19/12	50,8	25,0	25,0	80
1"-1/2" 25/12	50,8	50,5	25,0	140
1"-3/4" 25/19	50,8	50,5	25,0	160
1 1/2"-1/2" 38/12	76,2	50,5	25,0	200
1 1/2"-3/4" 38/19	76,2	50,5	25,0	200
1 1/2"-1" 38/25	92,4	50,5	50,5	240
2"-1 1/2" 51/38	92,4	64,0	50,5	250
2 1/2"-2" 63/51	92,4	77,5	64,0	300
3"-2" 76/51	92,4	91,0	64,0	400
3"-2 1/2" 76/63	92,4	91,0	77,5	390
4"-3" 101/76	92,4	119,0	91,0	775

Reducción Exc. EL.

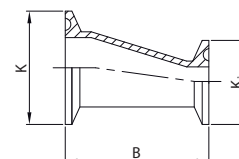
W32



DN	B	D	D ₁	gr
3/4"-1/2" 19/12	25,4	19,0	12,7	50
1"-1/2" 25/12	25,4	25,4	12,7	80
1"-3/4" 25/19	25,4	25,4	19,0	80
1 1/2"-1" 38/25	67,0	38,1	25,4	110
2"-1 1/2" 51/38	67,0	50,8	38,1	150
2 1/2"-2" 63/51	67,0	63,5	50,8	170
3"-2" 76/51	67,0	76,2	50,8	250
3"-2 1/2" 76/63	67,0	76,2	63,5	230
4"-3" 101/76	67,0	101,6	76,2	510

Reducción Exc. E. SM.

K32



DN	B	K	K ₁	gr
3/4"-1/2" 19/12	50,8	25,0	25,0	80
1"-1/2" 25/12	50,8	50,5	25,0	160
1"-3/4" 25/19	50,8	50,5	25,0	160
1 1/2"-1" 38/25	92,4	50,5	50,5	250
2"-1 1/2" 51/38	92,4	64,0	50,5	260
2 1/2"-2" 63/51	92,4	77,5	64,0	300
3"-2" 76/51	92,4	91,0	64,0	400
3"-2 1/2" 76/63	92,4	91,0	77,5	400
4"-3" 101/76	92,4	119,0	91,0	790

- Obtenidos a partir de tubos unidos eléctricamente, laminados en frío y tratados térmicamente.
- Calibrados interior y exteriormente con la finalidad de obtener una forma circular perfecta.
- Provistos de muescas en los extremos para asegurar la perfecta ortogonalidad de las superficies.

- Producción estandar: 1/2"-4". Bajo pedido, dimensiones hasta 8".
- Bajo pedido, producción según normas ISO.
- **Calidad del material:** A-316-L
- **Acabado estandar:** pulido exterior y satinado interior, gr 150.

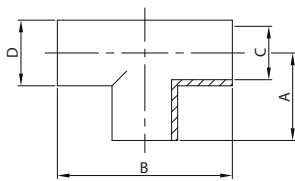


Accesorios para industria farmacéutica

Gama CLAMP

Te EL.

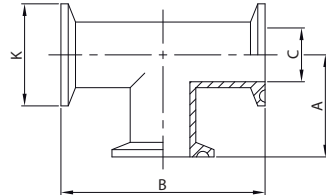
W7



DN	A	B	C	D	gr
1/2" 12	53,9	107,8	9,4	12,7	56
3/4" 19	53,9	107,8	15,7	19,0	98
1" 25	28,6	57,2	22,1	25,4	80
1 1/2" 38	42,1	84,2	34,8	38,1	160
2" 51	52,4	104,8	47,5	50,8	235
2 1/2" 63	59,5	119,0	60,2	63,5	340
3" 76	65,9	131,8	72,9	76,2	500
4" 101	87,3	174,6	97,4	101,6	900

Te E SM.

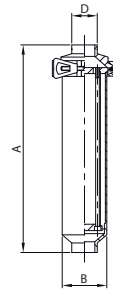
K7



DN	A	B	C	K	gr
1/2" 12	66,6	133,2	9,4	25,0	104
3/4" 19	66,6	133,2	15,7	25,0	150
1" 25	60,3	120,6	22,1	50,5	175
1 1/2" 38	69,9	139,8	34,8	50,5	315
2" 51	88,9	177,8	47,5	64,0	628
2 1/2" 63	88,9	177,8	60,2	77,5	780
3" 76	95,3	190,6	72,9	91,0	1.135
4" 101	114,3	228,6	97,4	119,0	1.760

Filtro Línea EL.

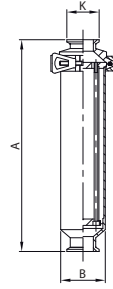
W42



DN	A	B	D	gr
1" 25	326,0	70,0	25,4	3.000
1 1/2" 38	326,0	70,0	38,1	3.000
2" 51	426,0	70,0	50,8	3.300
2 1/2" 63	524,5	85,0	63,5	4.650
3" 76	568,0	101,0	76,2	5.700

Filtro Línea E. SM.

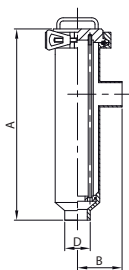
K42



DN	A	B	K	gr
1" 25	326,0	70,0	50,5	3.170
1 1/2" 38	326,0	70,0	50,5	3.300
2" 51	426,0	70,0	64,0	3.620
2 1/2" 63	524,5	85,0	77,5	5.190
3" 76	568,0	101,0	91,0	6.400

Filtro 90° EL.

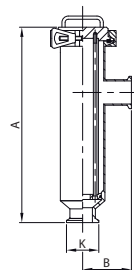
W43



DN	A	B	D	gr
1" 25	304,0	70,0	25,4	3.100
1 1/2" 38	304,0	70,0	38,1	3.100
2" 51	404,0	72,0	50,8	3.400
2 1/2" 63	497,0	85,0	63,5	4.800
3" 76	548,0	96,0	76,2	5.900

Filtro 90° E. SM.

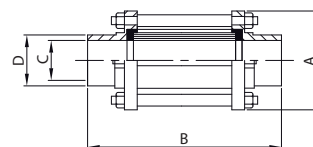
K43



DN	A	B	K	gr
1" 25	304,0	82,7	50,5	3.240
1 1/2" 38	304,0	82,7	50,5	3.500
2" 51	404,0	84,7	64,0	3.850
2 1/2" 63	497,0	97,7	77,5	5.590
3" 76	548,0	108,7	91,0	6.900

Mirilla EL.

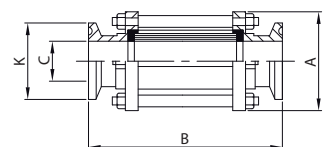
W45



DN	A	B	C	D	gr
1" 25	55,0	147,0	22,1	25,4	400
1 1/2" 38	70,0	153,0	34,8	38,1	620
2" 51	85,0	153,0	47,5	50,8	860
2 1/2" 63	95,0	163,0	60,2	63,5	950
3" 76	105,0	173,0	72,9	76,2	1.100
4" 101	140,0	173,0	97,4	101,6	2.760

Mirilla E. SM.

K45



DN	A	B	C	K	gr
1" 25	55,0	165,0	22,1	50,5	560
1 1/2" 38	70,0	165,0	34,8	50,5	760
2" 51	85,0	165,0	47,5	64,0	1.050
2 1/2" 63	95,0	165,0	60,2	77,5	1.180
3" 76	105,0	165,0	72,9	91,0	1.400
4" 101	140,0	165,0	97,4	119,0	3.260

Mirillas:

- De sólida y robusta construcción.
- Vidrio pyrex. Bajo pedido, protección exterior de plexiglás.
- Equipadas con tirantes especiales y con juntas para eliminar las presiones de carga y las vibraciones sobre el vidrio.
- Máxima presión de operación: 10 Bar.
- Cuerpo: A-316-L

Filtros:

- Las piezas filtrantes se pueden extraer fácilmente.
- Producción estandar: Cartuchos filtrantes de chapa con orificios de 0,5 mm, 2 mm ó 3 mm y, eventualmente, con cobertura de red metálica de 80 a 500 mesh.
- Máxima presión de operación: 5 Bar.
- **Calidad del material:** A-304 -L, A-316-L

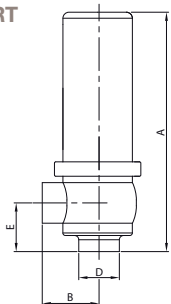


Accesorios para industria farmacéutica

Gama CLAMP

Válvula Seguridad EL.

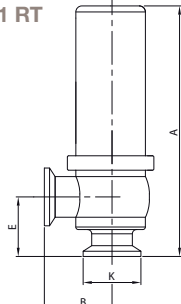
W61 RT



DN	A	B	D	E	gr
1" 25	190,0	45,0	25,4	30,0	2.185
1 1/2" 38	233,0	56,0	38,1	38,0	2.270
2" 51	245,0	65,0	50,8	45,0	2.910
2 1/2" 63	261,0	70,0	63,5	52,0	4.550
3" 76	276,0	85,0	76,2	60,0	6.100

V. Seguridad E. SM.

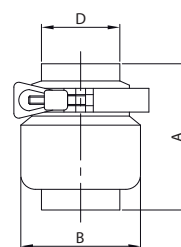
K61 RT



DN	A	B	E	K	gr
1" 25	203,0	58,0	43,0	50,5	2.300
1 1/2" 38	246,0	59,0	51,0	50,5	2.350
2" 51	258,0	78,0	58,0	64,0	3.030
2 1/2" 63	274,0	83,0	65,0	77,5	4.710
3" 76	289,0	93,0	73,0	91,0	6.280

Válvula Retención EL.

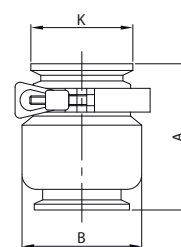
W64 V



DN	A	B	D	gr
1/2" 12	74,0	25,0	12,7	240
3/4" 19	75,0	25,0	19,0	520
1" 25	94,0	50,5	25,4	880
1 1/2" 38	95,0	64,0	38,1	1.070
2" 51	102,0	77,5	50,8	1.750
2 1/2" 63	111,0	91,0	63,5	2.140
3" 76	125,0	119,0	76,2	3.950
4" 101	136,0	131,0	101,6	4.900

V. Retención E. SM.

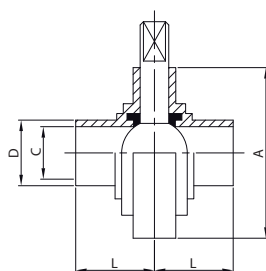
K64 V



DN	A	B	K	gr
1/2" 12	74,0	25,0	25,0	260
3/4" 19	75,0	40,0	25,0	540
1" 25	94,0	50,5	50,5	900
1 1/2" 38	95,0	64,0	50,5	1.100
2" 51	102,0	77,5	64,0	1.800
2 1/2" 63	111,0	91,0	77,5	2.200
3" 76	125,0	119,0	91,0	4.020
4" 101	136,0	131,0	119,0	5.000

Válvula Mariposa EL.

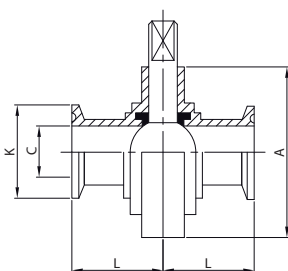
W100 BV



DN	A	C	D	L	gr
1" 25	79,0	22,1	25,4	34,0	725
1 1/2" 38	85,0	34,8	38,1	38,0	805
2" 51	105,0	47,5	50,8	40,0	1.270
2 1/2" 63	112,0	60,2	63,5	40,0	1.460
3" 76	125,0	72,9	76,2	41,0	1.755
4" 101	157,0	97,4	101,6	44,0	2.480
5" 127	180,0	122,0	127,0	40,0	4.100
6" 152	212,0	147,4	152,4	40,0	6.000
8" 203	256,5	198,2	203,2	45,0	7.800
10" 254	306,5	249,0	254,0	45,0	17.000

Válvula Mariposa E. SM.

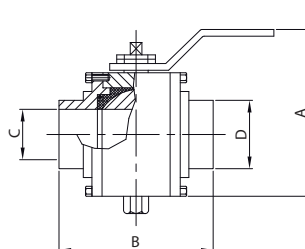
K100 BV



DN	A	C	K	L	gr
1" 25	79,0	22,1	50,5	35,0	950
1 1/2" 38	85,0	34,8	50,5	36,0	995
2" 51	105,0	47,5	64,0	40,0	1.200
2 1/2" 63	112,0	60,2	77,5	40,0	1.600
3" 76	125,0	72,9	91,0	40,0	1.950
4" 101	157,0	97,4	119,0	45,0	3.450
5" 127	180,0	122,0	144,5	41,0	4.300
6" 152	212,0	147,4	166,0	41,0	6.200
8" 203	256,5	198,2	217,0	45,0	8.100
10" 254	306,5	249,0	268,0	45,0	17.400

V. Bola San. Drenaje EL.

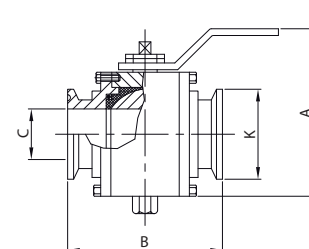
W50



DN	A	B	C	D	gr
1" 25	90,0	95,0	22,1	25,4	1.100
1 1/2" 38	110,0	107,0	34,8	38,1	2.090
2" 51	126,0	118,0	47,5	50,8	3.140
2 1/2" 63	143,0	135,0	60,2	63,5	4.730
3" 76	163,0	158,0	72,0	76,2	6.940
4" 101	202,0	170,0	97,4	101,6	13.570

V. Bola San. Dr. E. SM.

K50



DN	A	B	C	K	gr
1" 25	90,0	95,0	22,1	50,5	1.120
1 1/2" 38	110,0	107,0	34,8	50,5	2.120
2" 51	126,0	118,0	47,5	64,0	3.190
2 1/2" 63	143,0	135,0	60,2	77,5	4.790
3" 76	163,0	158,0	72,0	91,0	7.010
4" 101	202,0	170,0	97,4	119,0	13.670

Válvulas de Seguridad:

- Elemento de regulación de la presión situado en el interior del cuerpo de la válvula para asegurar la imposibilidad de maniobras accidentales.
- Se pueden regular de 0 a 5 Bar; bajo pedido, se pueden regular hasta 12 Bar.
- Acabado standard pulido exterior y satinado interior gr. 120.
- Bajo pedido se pueden suministrar otros acabados.

Válvulas de Retención:

- De sólida y robusta construcción, obtenidas de un bloque de acero inoxidable.
- Amplia abertura de diafragma para permitir el paso de sustancias sólidas.
- Junta estanca de PTFE o, bajo pedido, otros elastómeros.
- Equipadas con muelles de baja presión que permiten el funcionamiento de la válvula tanto en posición vertical como en horizontal.
- Máxima presión de ejercicio: 10 Bar.

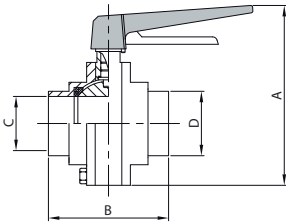


Accesorios para industria farmacéutica

Gama CLAMP

Válvula Bola EL.

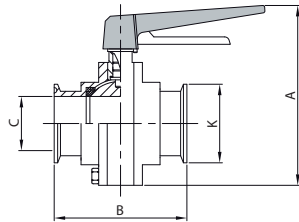
W81



DN	A	B	C	D	gr
1 1/2" 38	138,0	73,0	35,1	38,1	1.600
2" 51	155,0	80,0	47,8	50,8	2.600
2 1/2" 63	176,0	97,0	60,5	63,5	4.000
3" 76	190,0	109,0	72,9	76,2	5.000

Válvula Bola E. SM.

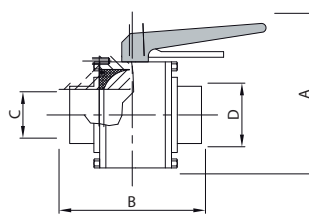
K81



DN	A	B	C	K	gr
1 1/2" 38	138,0	87,0	35,1	50,5	1.630
2" 51	155,0	90,0	47,8	64,0	2.630
2 1/2" 63	176,0	105,0	60,5	77,5	4.040
3" 76	190,0	121,0	72,9	91,0	5.040

V. Bola Extraible Sanit. EL.

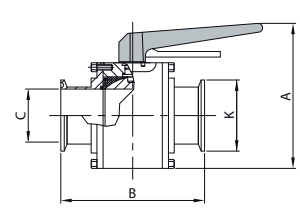
W90



DN	A	B	C	D	gr
1/2" 12	100,0	74,5	9,4	12,7	760
3/4" 19	100,0	74,5	15,7	19,0	760
1" 25	110,0	95,0	22,1	25,4	1.130
1 1/2" 38	130,0	109,0	34,8	38,1	2.070
2" 51	145,0	124,0	47,5	50,8	2.800
2 1/2" 63	168,0	135,0	60,2	63,5	4.840
3" 76	182,0	158,0	72,0	76,2	7.480

V. Bola Extraible Sanit. E. SM.

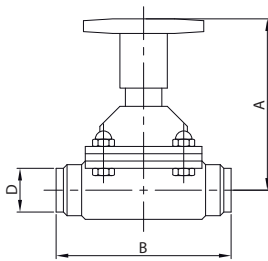
K90



DN	A	B	C	K	gr
1/2" 12	100,0	80,5	9,4	25,0	780
3/4" 19	100,0	80,5	15,7	25,0	780
1" 25	110,0	95,0	22,1	50,5	1.150
1 1/2" 38	130,0	109,0	34,8	50,5	2.100
2" 51	145,0	124,0	47,5	64,0	2.850
2 1/2" 63	168,0	135,0	50,2	77,5	4.900
3" 76	182,0	158,0	72,0	91,0	7.550

V. Membrana EL.

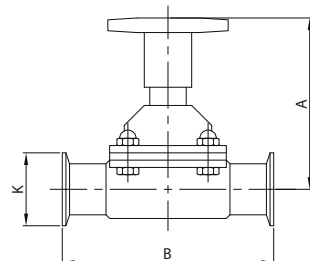
57W



DN	A	B	D	gr
1/2" 12	78,0	89,0	12,7	840
3/4" 19	79,0	102,0	19,0	1.200
1" 25	92,0	114,0	25,4	1.680
1 1/2" 38	112,0	140,0	38,1	3.140
2" 51	135,0	159,0	50,8	5.040

V. Membrana E. SM.

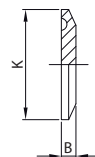
57K



DN	A	B	K	gr
1/2" 12	78,0	89,0	25,0	840
3/4" 19	79,0	102,0	25,0	1.200
1" 25	92,0	114,0	50,5	1.680
1 1/2" 38	112,0	140,0	50,5	3.140
2" 51	135,0	159,0	64,0	5.040

Tapón

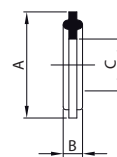
K16



DN	B	K	gr
1/2" 12	4,7	25,0	16
3/4" 19	4,7	25,0	16
1" 25	6,4	50,5	70
1 1/2" 38	6,4	50,5	70
2" 51	6,4	64,0	140
2 1/2" 63	6,4	77,5	200
3" 76	6,4	91,0	410
4" 101	7,9	119,0	570
5" 127	11,0	144,4	1.400
6" 152	13,0	166,0	2.200
8" 203	13,0	217,0	3.700

Junta

K40



DN	A	B	C
1/2" 12	21,8	4,5	10,0
3/4" 19	21,8	4,5	16,5
1" 25	50,5	5,3	23,2
1 1/2" 38	50,5	5,3	36,2
2" 51	64,0	5,3	49,2
2 1/2" 63	77,5	5,3	60,5
3" 76	91,0	5,3	73,1
4" 101	119,0	5,3	97,6
4" 104	119,0	5,3	100,0
5" 127	144,4	5,3	121,0
6" 152	166,0	5,3	146,4
8" 203	217,0	5,3	194,2

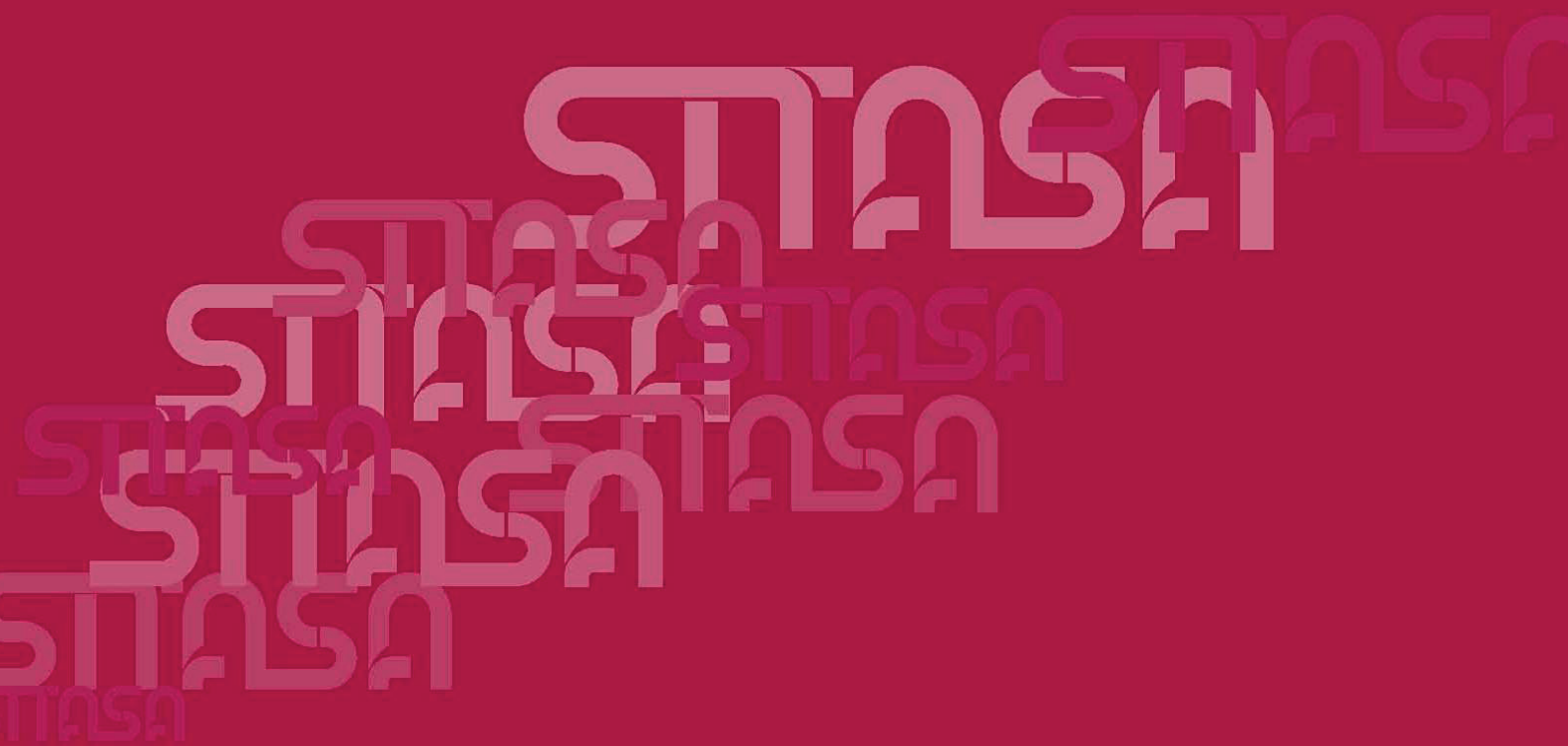
Válvulas de Bola:

- De fabricación sólida y robusta. Material 316-L
- Fácilmente esterilizables. Los elementos internos son fácilmente accesibles durante las fases de lavado CIP en el modelo K81.
- Se pueden desmontar fácilmente. Desmontaje en línea en el modelo K90.
- Bola alojada en el interior de las bridas con consiguiente aligeramiento de la estructura y reducción de las dimensiones.
- Equipadas con mandos manuales o neumáticos.
- Mandos neumáticos horizontales y verticales de simple efecto, doble efecto y de regulación del flujo que se pueden equipar con microsensor, microinterruptor (eléctrico o neumático), electroválvula (24 V CA, 24 V CC, 48 V CA), conector.
- Junta sanitaria en el modelo K90.
- Máxima presión de operación: 10 Bar.

Válvulas de Membrana:

- Realizadas respetando rigurosamente los criterios y los tests establecidos por las normas 3-A.
- Cuerpo realizado mediante estampado en caliente, tratado térmicamente, trabajado mecánicamente y pulido. Material 316-L.
- Mandos manuales y neumáticos de acero inoxidable AISI 316L para esterilizaciones a elevadas temperaturas.
- Membranas de EPDM o PTFE. Membranas de EPDM y soportes elásticos para las membranas de PTFE entretejados para otorgar mayor resistencia mecánica.
- Cierre perfecto y aislamiento completo de factores contaminantes exteriores.





Suministros Industriales del Tajo, S.A.

C/ Jarama 52, Polígono Industrial, 45007 Toledo (Spain)

Telf: (34) 925 23 22 00

Fax: (34) 925 23 21 47

sitasa@sitasa.com

www.sitasa.com

