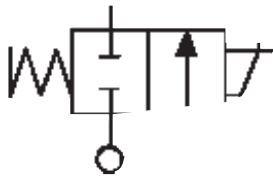
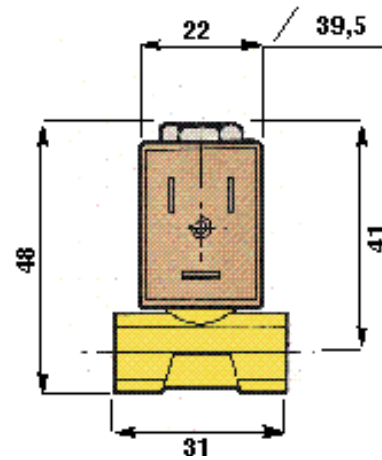


Serie - Series **ELF**
Tipo - Type **5511**

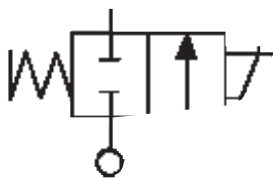


Valvola 2/2 vie N.C. AZIONE DIRETTA 1/8" G
2/2 way valve N.C. DIRECT CONTROL 1/8" G
Pressioni: 0 - 15 bar • Pressures: 0 - 15 bar

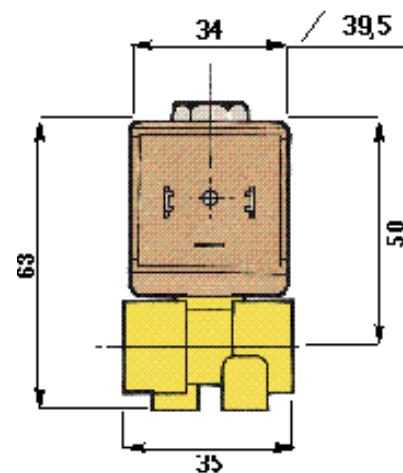


Ø mm	KV l/min	M.O.P.D. bar		PESO/WEIGHT Kg
		AC	DC	
1,5	1,2	15	10	0,092
2,0	1,8	10	5	0,092
2,7	2,7	5	5	0,092

Serie - Series **ES 188**
Tipo - Type **6612**



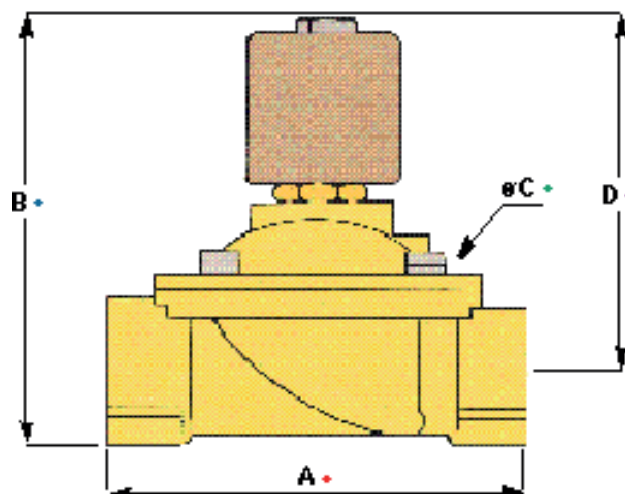
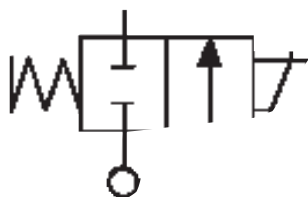
Valvola 2/2 vie N.C. AZIONE DIRETTA 1/4" G
2/2 way valve N.C. DIRECT CONTROL 1/4" G
Pressioni: 0 - 20 bar • Pressures: 0 - 20 bar



Ø mm	KV l/min	M.O.P.D. bar		PESO/WEIGHT Kg
		AC	DC	
1,5	1,2	20	16	0,218
2,0	1,8	16	12	0,218
3,0	3,0	10	8	0,218

Serie - Series **VS0**
Tipo - Type **84**

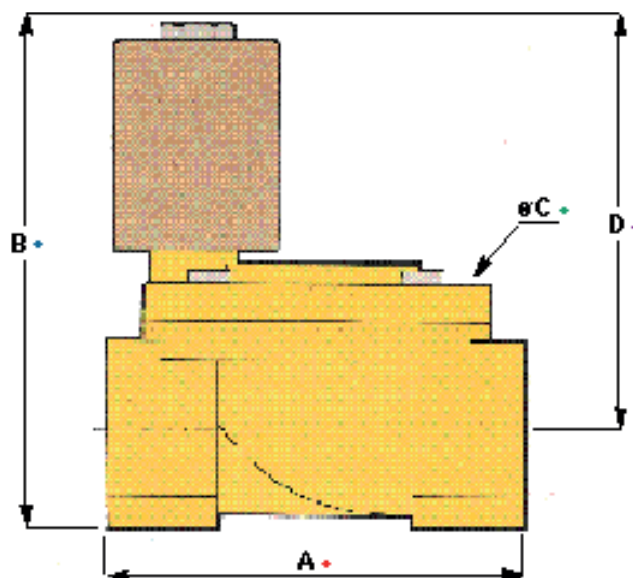
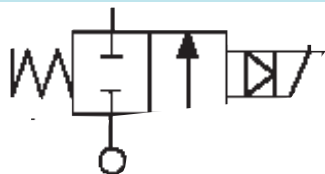
Valvola 2/2 vie N.C. AZIONE MISTA 3/8"- 2" G
2/2 way valve N.C. COMBINED OPERATION 3/8"- 2" G
Pressioni: 0 - 10 bar • Pressures: 0 - 10 bar



ATTACCHI PIPES	Ø mm	CODICE CODE	KV l/min	M.O.P.D. bar		DIMENSIONI/DIMENSIONS				PESO/WEIGHT Kg
				AC	DC	A •	B •	C •	D •	
3/8"	12	8413	35	10	4	61	105	48	92	0,680
1/2"	12	8414	35	10	4	61	105	48	92	0,660
3/4"	20	8415	95	8	3	100	115	80	96	1,085
1"	25	8416	173	8	3	100	115	80	96	1,165
1 1/4"	36	8417	405	6	3	145	200	128	170	5,000
1 1/2"	40	8418	450	6	3	145	200	128	170	4,800
2"	51	8419	580	4	2	174	225	146	188	7,250

Serie - Series **ESM**
Tipo - Type **85**

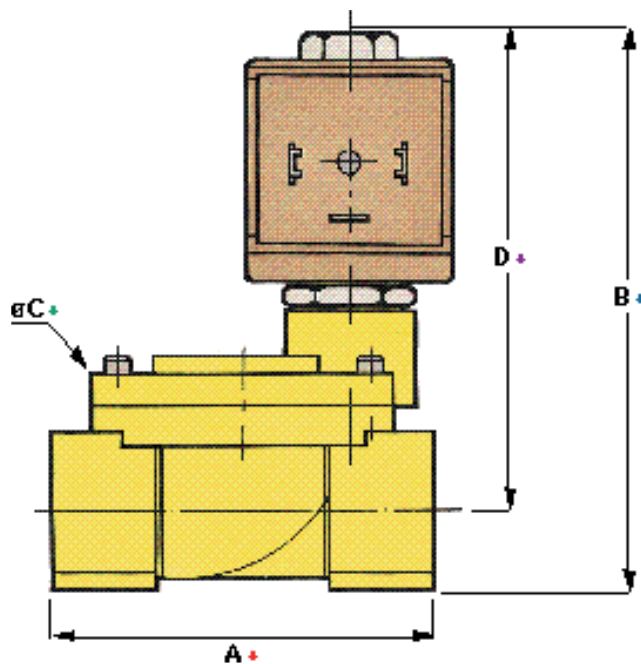
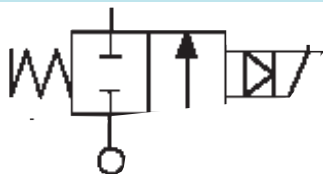
Valvola 2/2 vie N.C. SERVOCOMANDATA 3/8"- 1/2" G
2/2 way valve N.C. PILOT OPERATED 3/8"- 1/2" G
Pressioni: 0,25 - 15 bar • Pressures: 0,25 - 15 bar



ATTACCHI PIPES	Ø mm	CODICE CODE	KV l/min	M.O.P.D. bar		DIMENSIONI/DIMENSIONS				PESO/WEIGHT Kg
				AC	DC	A •	B •	C •	D •	
3/8"	12	8513	35	15	10	61	71	48	59	0,540
1/2"	12	8514	35	15	10	61	71	48	59	0,520

Serie - Series **ESM**
Tipo - Type **86**

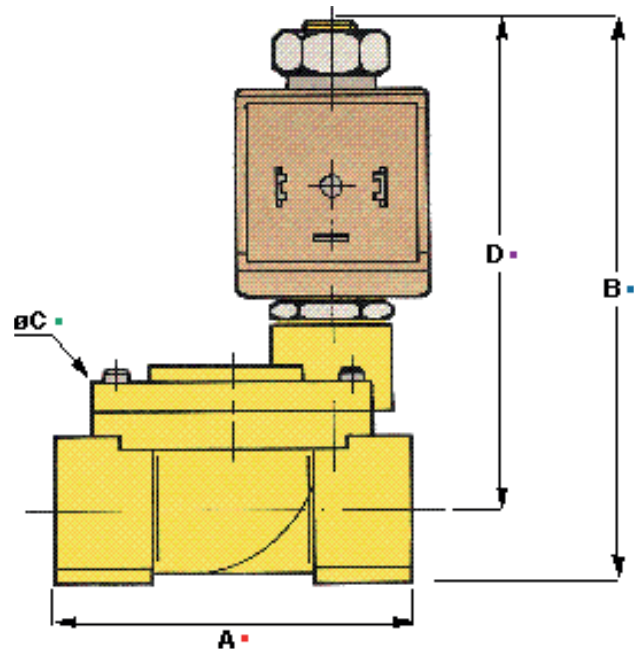
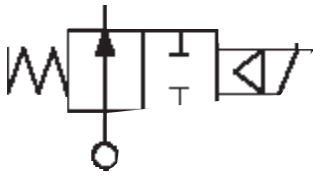
Valvola 2/2 vie N.C. SERVOCOMANDATA 3/8"- 3" G
2/2 way valve N.C. PILOT OPERATED 3/8"- 3" G
Pressioni: 0,3 - 15 bar • Pressures: 0,3 - 15 bar



ATTACCHI PIPES	Ø mm	CODICE CODE	KV l/min	M.O.P.D. bar		DIMENSIONI/DIMENSIONS				PESO/WEIGHT Kg
				AC	DC	A •	B •	C •	D •	
3/8"	12	8613	35	15	10	61	89	48	77	0,520
1/2"	12	8614	35	15	10	61	89	48	77	0,500
3/4"	20	8615	95	10	10	85	101	69	84	0,820
1"	25	8616	173	10	10	100	107	80	87	1,068
1 1/4"	32	8617	360	10	10	131	122	112	95	2,700
1 1/2"	40	8618	450	10	10	145	128	128	98	3,000
2"	51	8619	580	10	10	174	145	146	108	4,600
2 1/2"	65	8620	1050	10	10	243	178	184	135	9,400
3"	75	8621	1380	10	10	250	188	184	140	11,400

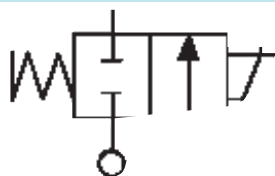
Serie - Series **ESM/NA**
Tipo - Type **87**

Valvola 2/2 vie N.A. SERVOCOMANDATA 3/8"- 3" G
2/2 way valve N.O. PILOT OPERATED 3/8"- 3" G
Pressioni: 0,3 - 10 bar • Pressures: 0,3 - 10 bar

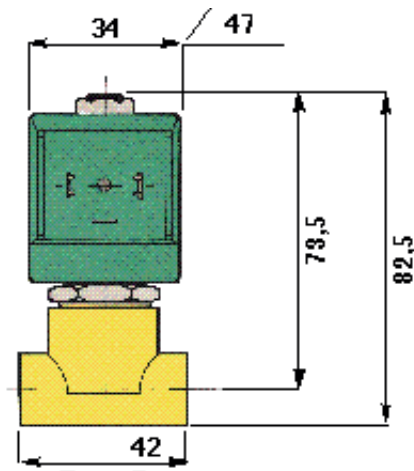


ATTACCHI PIPES	Ø mm	CODICE CODE	KV l/min	M.O.P.D.		DIMENSIONI/DIMENSIONS				PESO/WEIGHT Kg
				AC	DC	A •	B •	C •	D •	
3/8"	12	8713	35	10	10	61	95	48	83	0,534
1/2"	12	8714	35	10	10	61	95	48	83	0,514
3/4"	20	8715	95	10	10	85	107	69	90	0,834
1"	25	8716	173	10	10	100	113	80	93	1,080
1 1/4"	32	8717	360	10	10	131	128	112	101	2,710
1 1/2"	40	8718	450	10	10	145	134	128	104	3,010
2"	51	8719	580	10	10	174	151	146	114	4,610
2 1/2"	65	8720	1050	10	10	243	184	184	141	9,410
3"	75	8721	1380	10	10	250	194	184	146	11,410

Serie - Series **ES**
Tipo - Type **9942**



Valvola 2/2 vie N.C. AZIONE DIRETTA 1/4" G
2/2 way valve N.C. DIRECT CONTROL 1/4" G
Pressioni: 0 - 16 bar • Pressures: 0 - 16 bar

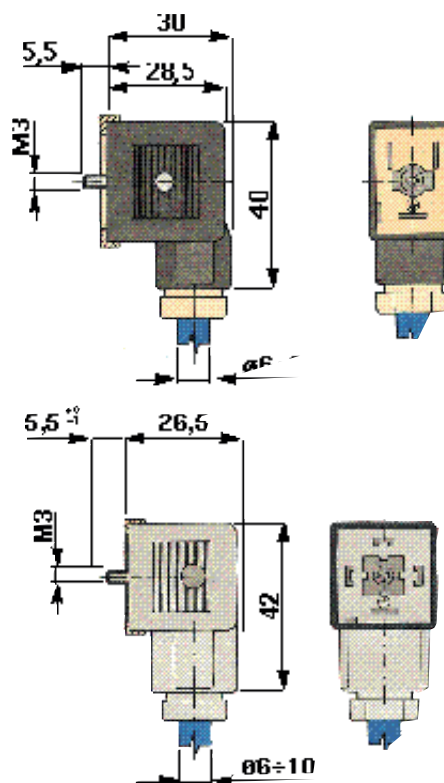


Ø mm.	KV l/min	M.O.P.D. bar		PESO/WEIGHT Kg
		AC	DC	
2,8	4	16	16	0,400
4,0	6	14	14	0,400
6,0	8	11	11	0,400

ACCESSORI ACCESSORIES

Bobina con fili uscenti. Connettori tripolari protezione IP65 PG9 e PG11

Coil with connecting cables. Connector three poles protection IP65 PG9 or PG11.



INFORMAZIONI TECNICHE

Caratteristiche generali: Valvole a 2 vie, normalmente chiuse o normalmente aperte, ad azione diretta, servocomandate o ad azione mista per servizio continuo (ED 100%).

Impiego: **Acqua** (per altri fluidi interpellare il nostro ufficio tecnico).
Temperatura ambiente: +80°C
Temperatura fluido: NBR EPDM FPM
90°C 130°C 150°C

Pressione: Vedi tabelle pagine precedenti.

Bobine: Classe F (155°C)
Voleggi standard:
CA (~) 12V, 24V, 42V, 48V, 110V, 230V, 400V
Hz 50 o 60
CC (=) 12V, 24V, 48V, 110V
Altri voltaggi su richiesta.
Potenza: Tipo 5511 e 85..:
C.A. (~) 11VA
C.C. (=) 10W
Tipo 6612, 86.. e 87..:
C.A. (~) 17VA
C.C. (=) 16W
Tipo 9942: C.A. (~) 20VA
C.C. (=) 13W
Tipo 84.. sino a 1":
C.A. (~) 19VA
C.C. (=) 13W
da 1 1/4" a 2":
C.A. (~) 145VA
C.C. (=) 36W

Imballo: Le valvole sono fornite complete di bobina e connettore tripolare protezione IP65 (DIN 43650) eccetto il modello 5511 (connettore solo su richiesta). Per i modelli 5511, 85.., 6612, 86.. e 87.. sono disponibili bobine con fili uscenti, protezione IP67.

TECHNICAL DATA

General features: 2/2 way valves normally closed or normally open, direct control, pilot control or combined operation for continuous duty (ED 100%).

Employ: **Water** (for other media contact our technical office).

Ambient temperature: +80°C
Fluid temperature: NBR EPDM FPM
90°C 130°C 150°C

Pressure: See tables in the previous pages.

Coils: Insulation class F (155°C)
Standard voltages:
AC (~) 12V, 24V, 42V, 48V, 110V, 230V, 400V
Hz 50 or 60
DC (=) 12V, 24V, 48V, 110V
Other voltages on request.
Power consumption: Type 5511 and 85..:
A.C. (~) 11VA
D.C. (=) 10W
Type 6612, 86.. and 87..:
A.C. (~) 17VA
D.C. (=) 6W
Type 9942: A.C. (~) 20VA
D.C. (=) 13W
Type 84.. up to 1":
A.C. (~) 19VA
D.C. (=) 13W
from 1 1/4" to 2":
A.C. (~) 145VA
D.C. (=) 36W

Packing: The solenoid valves are supplied complete with coil and connector three poles protection IP65 (DIN 43650) except for the type 5511 (connector only upon request). Coil with connecting cables protection IP67 is available for the models 5511, 85.., 6612, 86.. and 87..

INFORMAZIONI TECNICHE

Materiali:

Corpo valvola:	Ottone
Parti magnetiche a contatto col fluido:	Acciaio inossidabile
Tenuta:	NBR, EPDM, FPM
Bobine:	PBT Du Pont
Filo smaltato:	Rame, isolamento classe H (180°C).
Molla:	Acciaio inossidabile (AISI 302).

Installazione:

Le valvole possono essere installate in qualsiasi posizione tranne che con la bobina verso il basso. Le valvole della serie **VSO** devono essere installate con l'asse della bobina perpendicolare al piano terra.

Esecuzioni speciali:

Le valvole della serie **ESM** tipo 86.. possono essere fornite su richiesta con comando manuale o con regolazione anti colpo di ariete. I modelli 8617-8618 e 8619 sono disponibili su richiesta anche con membrana rinforzata per applicazioni con alta frequenza di intervento.

Approvazione IMQ e VDE per i seguenti voltaggi:

12 e 230V
50 o 60 Hz.

Approvazione UR per il seguente voltaggio:

110-120V/60Hz.

Siamo a disposizione per soluzioni personalizzate.

TECHNICAL DATA

Materials:

Valve body:	Brass
Magnetic parts in contact with the fluid:	Stainless steel
Sealing:	NBR, EPDM, FPM
Coils and enclosure:	PBT Du Pont
Wire:	Copper, insulation class H (180°C).
Spring:	Stainless steel (AISI 302).

Installation:

The valves can be installed in any position except with the coil turned downwards. The **VSO** series valves must be installed with the axis of the coil in a perpendicular position to the ground.

Special executions:

The **ESM** valves type 86.. can be supplied on request with manual override or with water hammering reducer. Types 8617-8618 and 8619 are available on request also with reinforced diaphragm for applications with high frequency operations.,

IMQ and VDE approval for the following voltages:

12 and 230V
50 or 60 Hz.

UR approval for the following voltage:

110-120V/60Hz.

We are available to study personalized solutions.



Suministros Industriales del Tajo, S.A.

C/ Jarama 52, Polígono Industrial, 45007 Toledo (Spain)

Tel: (34) 925 23 22 00

Fax: (34) 925 23 21 47

sitasa@sitasa.com

www.sitasa.com

